



**Welcoming ECDAN's first
Executive Director, Elizabeth Lule**

Dear ECDAN Community,

On behalf of ECDAN's [Interim Executive Group \(IEG\)](#), it is my pleasure to introduce you to ECDAN's new [Executive Director, Elizabeth Lule](#).

Elizabeth joined us on July 1st and comes to us with extensive global senior leadership and management experience. She has dedicated her career to strengthening global commitments and programs focused on the needs of women, adolescents, children, and infants.

Before joining ECDAN, she served as a senior consultant with the World Bank Group supporting the Global Financing Facility for Every Woman and Every Child and improving health security financing at global and national levels. She held several senior management and technical positions at the World Bank. She also worked as Director of Family Planning at the Bill and Melinda Gates Foundation, Regional Vice-President for Sub-Saharan Africa for Pathfinder International, and worked with USAID in Nigeria. She serves on several Boards of Directors, and has been a member of global think tanks and global advisory groups.

Throughout her career, she has been instrumental in establishing and supporting global partnerships, networks and coalitions to improve reproductive, maternal, newborn and adolescent health and HIV programs, including the Partnership for Maternal, Newborn, and Child Health (PMNCH), and the Reproductive Health Supplies Coalition.

Elizabeth was selected as the Executive Director after a months-long, rigorous process led by a sub-group of the IEG, with representation from each ECDAN constituency group.

I invite you to join me in welcoming Elizabeth, as she takes on this important leadership role to shape our collective movement for young children, helping to connect and amplify our individual efforts across agencies and sectors. She has been diligently speaking with stakeholders as part of her onboarding process, and would welcome a conversation with you.

We are fortunate to have her on board and look forward to her leadership. We hope you can join us in supporting her succeed on all of our behalves so that we can collectively have the greatest impact for all young children.

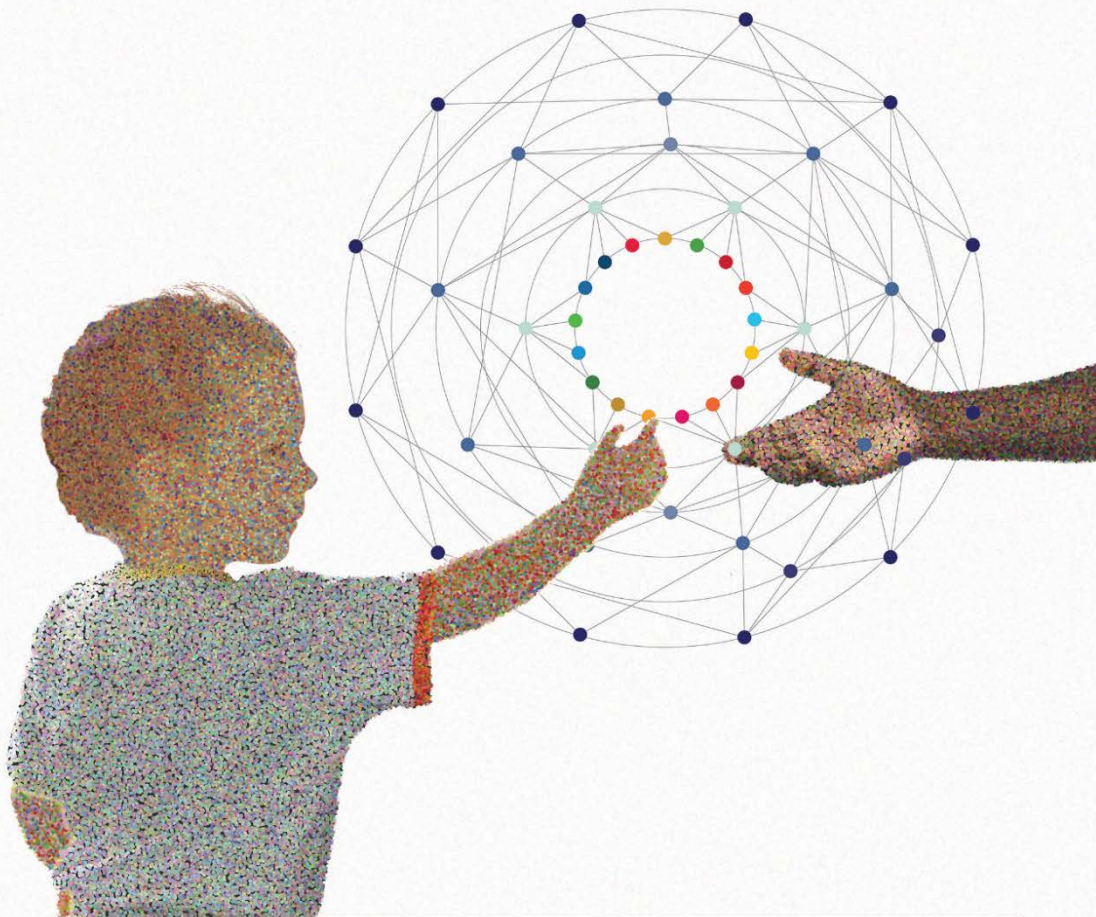
Sincerely,

Pia Britto, IEG Chair

On behalf of the ECDAN IEG

[Write to Elizabeth](#)

ANNALS *of* THE NEW YORK ACADEMY OF SCIENCES



VOLUME 1419, SPECIAL ISSUE

MAY 2018

Implementation Research and Practice for Early Childhood Development

New Webinar Series Explores What, Why and How ECD Interventions Work in Real-World Settings

The [Early Childhood Development Action Network](#) and the [National Institute for Early Education Research](#) announce a webinar series exploring implementation research and practice for early childhood development, based on the recent Annals of The New York Academy of Sciences [Special Issue](#).

First Webinar: “Why does implementation evidence matter for ECD?”

Date: Wednesday, August 1, 2018

Time: 9 a.m. Eastern

[Register here.](#)

The opening webinar in a year-long series features Special Issue editors [Aisha Yousafzai](#) Harvard University; [Frances E. Aboud](#) of McGill University; and [Pia R. Britto](#) of UNICEF, exploring the central role implementation research plays in understanding context, assessing performance, improving quality, facilitating systems’ strengthening, and informing large-scale use and sustainability of early learning interventions. [Elizabeth Lule](#), Executive Director of ECDAN will introduce and moderate this conversation.

Webinars will be complemented by a new [ECD Implementation blog series](#) focused on understanding what, why and how interventions work in real-world settings--and how to improve them.

Blogs and webinars will include Special Issue authors discussing topics such as determining costs and financing for ECD interventions, meeting needs of refugee children,

understanding and measuring program quality, and case studies of effective programs across the globe. [Click here for details.](#)

Research has demonstrated that a young child's environment shapes early development and lays the foundation in a relatively short period of time for a lifetime capacity to learn, adapt to change, and develop psychological resilience. The ANYAS Special Issue [Implementation Research and Practice for Early Childhood Development](#) shares research suggesting ways to strengthen interventions and strategies of embedding them within systems, making significant progress in unpacking the "how" of implementation.

[Register for the Webinar](#)



[Browse Countdown 2030 Country Profiles](#)

These profiles of 91 low- and middle-income countries are the first step toward a global monitoring and accountability system for early childhood development, affiliated with Countdown to 2030 for women's, children's and adolescents' health (www.countdown2030.org). The decision to assemble available data in country profiles was taken by authors during the 2016 launch of the Lancet series Advancing Early Childhood Development: From Science to Scale, and has been carried forward as the project of a sub-group to support the Nurturing Care Framework developed by WHO, UNICEF and partners.

These profiles are an attempt to compile, in one place, the available data for country and cross-country monitoring and to provide a baseline against which to monitor progress. The country profiles draw attention to significant gaps, especially in extracting data pertaining to the youngest children, measuring services to improve nurturing care, and measuring early childhood development as an outcome. However, progress is being made, and opportunities exist for further analyses with currently available data. We hope that the country profiles prompt advocacy and action to refine measurement parameters and collect comparable country data on these and related services

[Browse the 91 country profiles.](#)

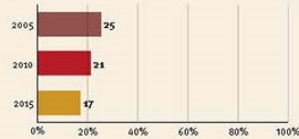
Demographics

Population	48 653 000
Annual births	746 000
Children under 5	3 712 000 (8%)
Under 5 mortality	15/1 000

Threats to Early Childhood Development

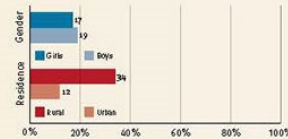
Maternal mortality	64/100 000	Young mothers (births by 18y)	20%
Low birthweight	10%	Preterm births	9%
Child poverty	7%	Under 5 stunting	14%
Harsh punishment	no data	Inadequate supervision	no data

Young children at risk of poor development

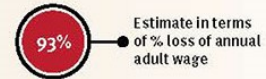


At risk in 2005, 2010 and 2015, using a composite indicator of under 5 stunting or poverty

Risks by gender and residence



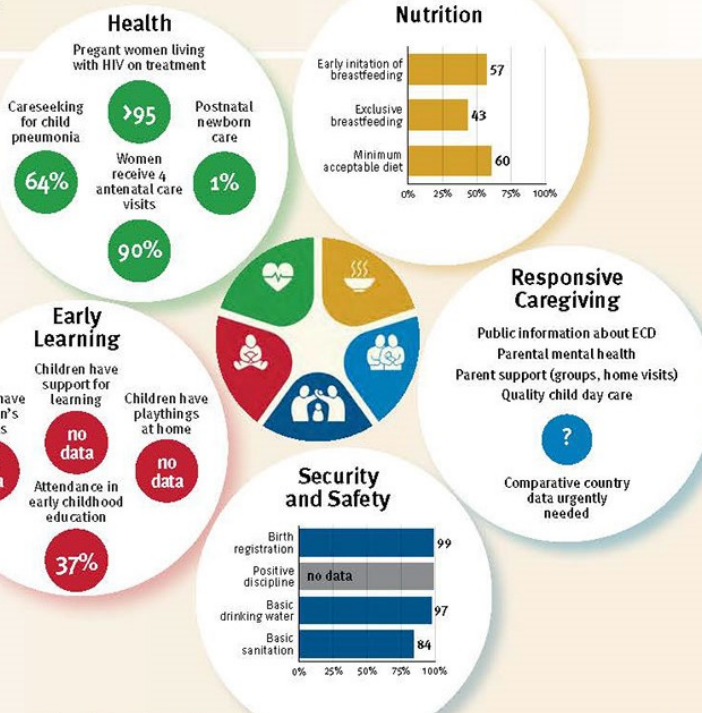
Lifetime cost of growth deficit in early childhood



Support and services for Early Childhood Development: Nurturing Care

Parents and caregivers need a facilitating environment of laws, policies, services and community support to assist them to provide their young children with nurturing care.

Support and services for Early Childhood Development: Facilitating Environments



Policies	
✗ Paid maternity leave	✓ Paid paternity leave
✓ National minimum wage	
✓ Child and family social protection	
✓ International Code of Marketing of Breastmilk Substitutes	

International Conventions	
✓	Convention on the Rights of the Child
✓	Convention on the Rights of People with Disabilities
✓	CRC Sale of Children, Child Prostitution & Child Pornography
✓	Convention on Protection of Children and Cooperation in Respect of Intercountry Adoption

NURTURING CARE

FOR EARLY CHILDHOOD DEVELOPMENT



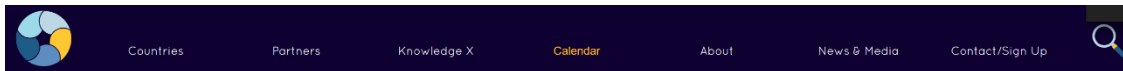
[Successful Nurturing Care Framework Launch](#)

The World Health Organization, UNICEF, and the World Bank Group, in collaboration with the Partnership for Maternal, Newborn & Child Health (PMNCH) and the Early Childhood Development Action Network (ECDAN), launched the Nurturing Care Framework for Early Childhood Development during the 71st World Health Assembly, on 23 May 2018. We thank all our partners, funders, speakers, and volunteers who made this event such a wonderful success. [Watch the event here and read all about it here.](#)

Find all resources related to the [Nurturing Care Framework here](#), including the [full framework](#), executive summaries in [english](#), [spanish](#), [arabic](#), and [french](#), and country case studies highlighting successful implementation of nurturing care in [Bulgaria](#), [Greece](#), [India](#), [Kazakhstan](#), [Kenya](#), [Serbia](#), [South Africa](#), and

[Vietnam](#). If you wish to launch the framework in your context, you can find the [presentation template here](#) and a [social media toolkit](#) here. Watch a [webinar on the Nurturing Care Framework](#) recently hosted by the International Step by Step Association (ISSA).

[Join the Nurturing Care Mailing List](#)



If you want to share an event click here

ECDAN Global Calendar							
Today		July 2018		Print	Week	Month	Agenda
Sun	Mon	Tue	Wed	Thu	Fri	Sat	
Jul 1	2	3	4	5	6	7	
8	9	10	11	12	13	14	
15	16	17	18	19	20	21	(8:00pm) ICECET 2018 : 20th International Conference on Early Childhood
22	23	24	25	26	27	28	
29	30	31	Aug 1	2	3	4	

[Global ECD Calendar is Live](#)

The Global ECD Calendar is now live and ready to be populated with your events, meetings, workshops, webinars, and any activity related to ECD from your corner of the world!

To share your event, just complete the [events form](#) and the [calendar](#) will be updated to include the event you wish to share with the global ECD community.

[Share your Event](#)

[Share your thoughts.](#)

Do you have any questions or good ideas you want to share with us?
We would love to hear from you.

Copyright © 2018 Early Childhood Development Action Network, All rights reserved.

Our mailing address is:

[700 12th St N.W.](#) • [Suite 700](#) • PMB 91319 • Washington, DC, USA 20005

[About ECDAN](#) • [Contact Us](#) • [Join Our Mailing List](#)

This email was sent to zonji@ecdan.org

[why did I get this?](#) [unsubscribe from this list](#) [update subscription preferences](#)

ECDAN · [700 12th St N.W.](#) · [Suite 700](#) · [Washington, District of Columbia 20005](#) · [USA](#)



MailChimp