



Sudan

Countdown to 2030

Women's, Children's & Adolescents' Health

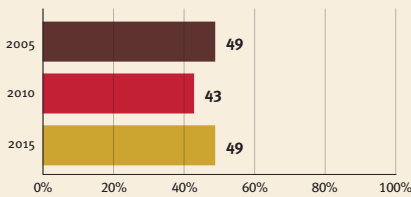
Demographics

Population	44,909,351
Annual births	1,402,232
Children under 5	6,439,797 (14%)
Under-five mortality	58/1,000

Threats to Early Childhood Development

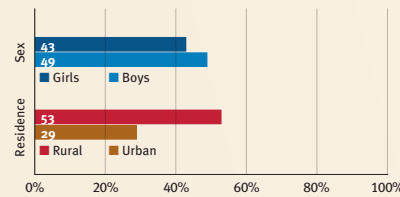
Maternal mortality	295/100,000	Adolescent birth rate	87/1,000
Low birthweight	no data	Preterm births	13%
Child poverty	17%	Under-five stunting	34%
Violent discipline	62%	Inadequate supervision	no data

Young children at risk of poor development

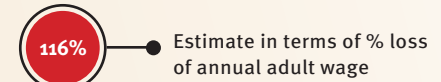


At risk in 2005, 2010 and 2015, using a composite indicator of under-five stunting or poverty

Risk by sex and residence



Lifetime cost of growth deficit in early childhood



Children with functional difficulty

no data

Children developmentally on-track

no data

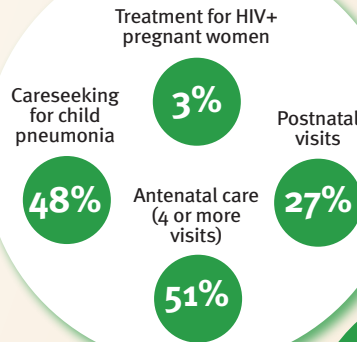
Support and services for early childhood development: Nurturing care

Parents and caregivers need a facilitating environment of laws, policies, services and community support to assist them in providing their young children with nurturing care.

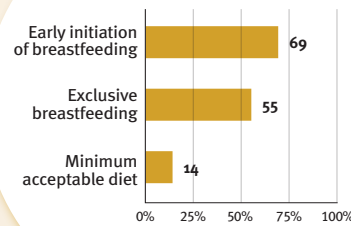
Facilitating environments

Policies	None	<14	14 - <18	18 - <26	≥26
Paid maternity leave (weeks)	None	<14	14 - <18	18 - <26	≥26
Paid paternity leave (weeks)	None	<14	14 - <18	18 - <26	≥26
International Code of Marketing of Breastmilk Substitutes (alignment)	Not	Slightly	Moderately	Substantially	
National minimum wage	✓				
Child and family social protection	✗				

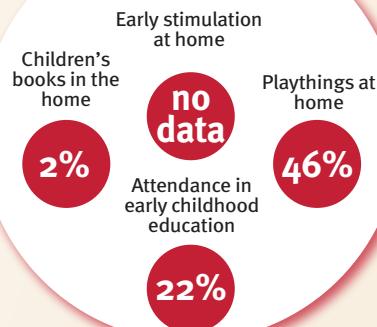
Health



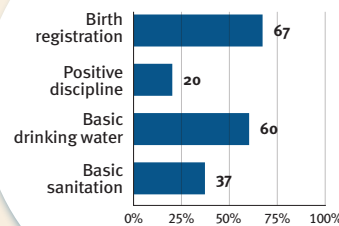
Nutrition



Early learning



Security and safety



Responsive caregiving

Public information about ECD
Parental mental health
Parent support (groups, home visits)
Quality child day care



Comparative country data urgently needed

International conventions

✓	Convention on the Rights of the Child
✓	Convention on the Rights of Persons with Disabilities
✓	CRC Optional Protocol on the Sale of Children, Child Prostitution and Child Pornography
✗	Hague Convention on Protection of Children and Cooperation in Respect of Intercountry Adoption